

Information provided by



Presented by Spokane Home Builders Association

Tour Dates and Hours:

10:00 am to 5:00 pm

Friday, Saturday and Sunday

September 25, 26 and 27 - October 2, 3, and 4, 2009

This beautiful home is one of 30+ fabulous, well-designed and quality-crafted homes, constructed by 15 local builders, that will be open for viewing Friday, Saturday and Sunday, September 25-27, and the following weekend Friday, Saturday and Sunday October 2-4, 2009. This annual, fall tradition is free to the public and brought to you by the Spokane Home Builders' Association and proudly presented by Pro-Build.

Envision Homes is proud to present **Crystal Meadows at West Terrace**. Just 8 minutes west of Spokane off Exit 272, Crystal Meadows is conveniently located near the Fairways Golf Course at West Terrace, and just minutes to Cheney, Spokane, FAFB, and Airway Heights. Crystal Meadows has a multitude of plans ranging in size from 1267-3256 square feet with pricing starting in the \$150s.

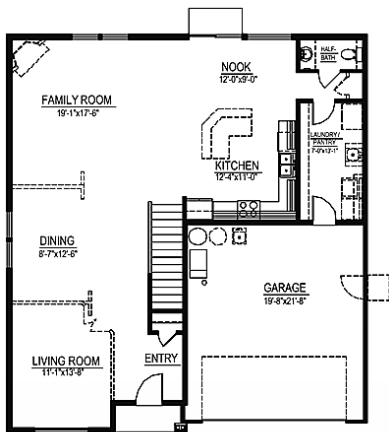
This featured home plan has 2932 square feet of living space and can be configured for 3 to 6 bedrooms including an optional main-floor guest/in-law suite. The show home built for this year's Fall Festival of Homes is a 4 bedroom with a number of upgrades. Each home at Crystal Meadows includes stucco exterior, front landscaping & sprinklers, central air, 30-year roof, and more. In addition to the \$8000 Federal Tax Credit, Envision homes is currently offering additional incentives from \$3000-\$6000, depending on model.

Crystal Meadows' on-site marketing by **Red Team at Keller Williams-Spokane** with the model/showroom **Open Daily 12-6pm**.

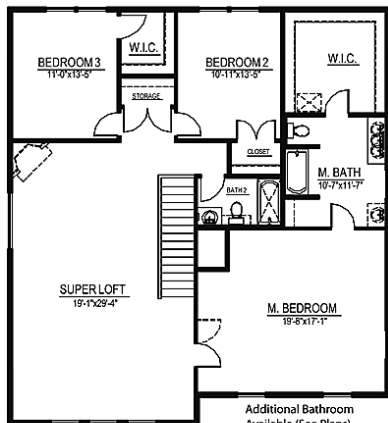
Getting there: 8 minutes west of Spokane on I-90 to exit 272, left across freeway to Westbow, ahead to Dour St., then right to 7406 S. Dour. For more details call **Ed Jones at 509.290.2900**.

For further information regarding the Fall Festival of Homes, please contact SHBA at 509-532-4990 or visit www.SpokaneFallFestivalOfHomes.com

ENVISION
Flomes



LIFESTYLE 1



Additional Bathroom Available (See Plans).