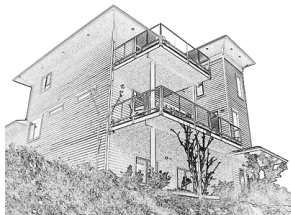


Information provided by



Let your dreams come true with Nordic Construction. We build quality into every part of your truly custom home. The home featured today is one such home.

The house is on three levels. The first level is a daylight basement with two bedrooms, a bath-room, recreation room and a mechanical room. The main floor has the kitchen, living room, dining area, den and a powder room. On the top floor you will find the master bedroom suite, plus another bedroom, bathroom and laundry room.

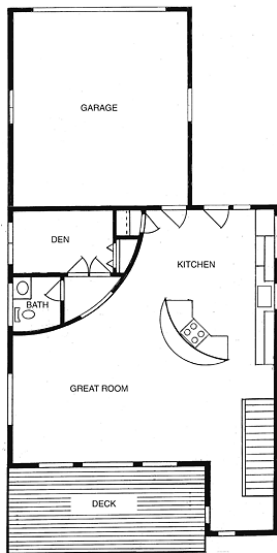
On the main floor, a curved wall around the den and powder room opens the kitchen to the living room and the fabulous view. The kitchen countertops are black concrete with stainless steel tile backsplashes and the island is crescent moon shaped.

Flooring on the main level is primarily bamboo, with tile in the powder room. The stair stringers are steel stair channel ground and clear coated, and the stair treads are glulams with clear finish. The posts on the stairs were custom made to match the treads and other glulam posts in the house. Beams and heat ducts are exposed.

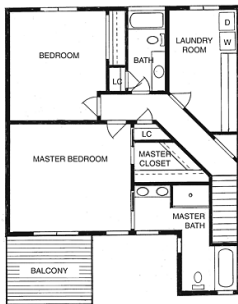
The master suite has a balcony with a spectacular view, a walk-in closet and a unique L shaped bathroom. The soaking tub is open to the spectacular view. There is also a two person shower with two shower heads and controls.

To see more of this house, as well as other homes designed and built by Nordic Construction go to www.nordiccs.com. This house is located at 3423 W. Pacific, and is currently for sale. For more info call 509-448-5917.

MAIN FLOOR



UPPER FLOOR



LOWER FLOOR

