

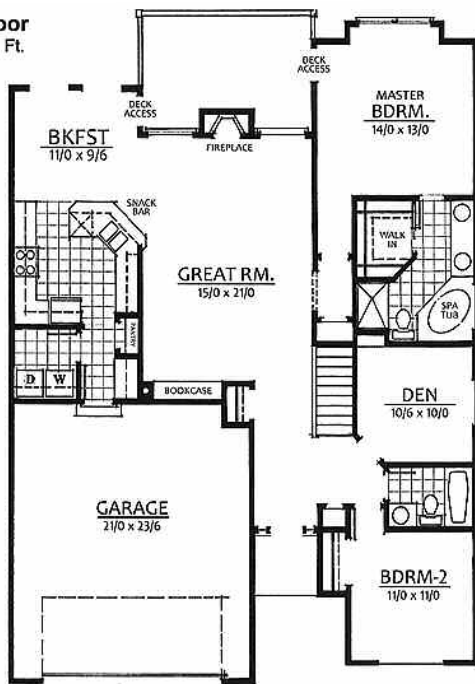
Information provided by



## NEED TO SELL BEFORE YOU BUY? WE WILL TAKE YOUR HOME IN TRADE!

Condrion Homes has created an exceptional 'great room' design that is ideally suited to take advantage of the tremendous views afforded by its location at Highland Estates. Our model home is perfect for the empty nester; however, this plan affords the homeowner the flexibility to expand to accommodate a family. With approximately 1600 square feet on the main level, The Hazelmere features a very open living area with 10' ceilings allowing a feeling of spaciousness in the granite tiled kitchen, dining room and great room. The luxury master suite includes a double-vanity dressing area and walk-in closet, plus a fully-equipped bath with soaking tub and separate 5' shower. A 2nd bedroom, plus a den/guest bedroom is adjacent to the entry foyer. A main-floor laundry room and large pantry complete the main-floor living area.

**Main Floor**  
1,562 Sq. Ft.



For those who need additional space, the full day-light/walk out basement can be expanded to include 2 additional bedrooms, a big family room, and a full, 4-piece bath. Fully finished, the home contains approximately 3200 square feet, with 4 bedrooms and 3 baths, and includes a 3-car garage.

See this model home at 4910 N. Del Rey today from 11:00 a.m. to 2:30 p.m. Priced at \$329,950, as well as others priced from \$270,000 to \$600,000 in 'Highland Estates.' Go west on Trent from Barker Road, then follow signs to Highland Estates. For more information call Jack Kestell, 993-1003/Kestell Co., 838-2002.

**CONDRION**  
Homes  
Foundations Built on Trust