

## Information provided by



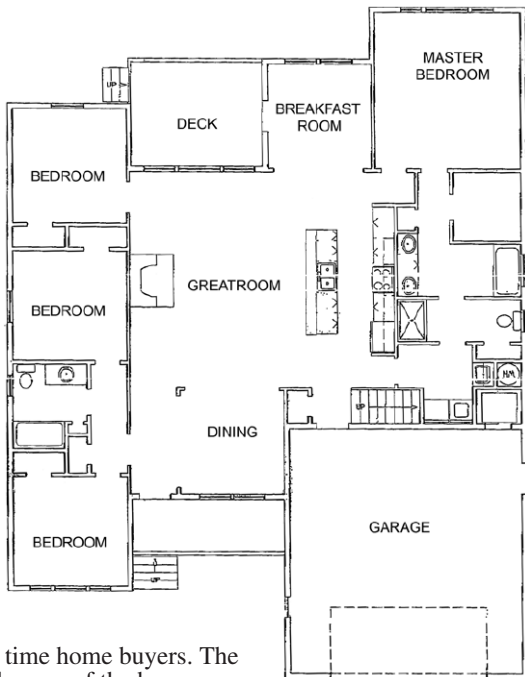
Thinking Green? This home constructed with Structural Insulated Panels (SIPs) will do the trick. SIPs are the basis for building green. They create an extremely strong, quiet home as well as a very energy efficient living space.

Everwood Homes has been specializing in SIPs construction for over ten years and we believe it is the best building system available. This rancher is less than 2000 sq. ft. The open great room with vaulted ceiling creates space for the kitchen and living room with the added beauty of a stone fireplace. The dining room and breakfast room spaces are also very flexible with the home owners needs in mind. A vaulted

bedroom/office at the front of the home and additional two bedrooms and bath give this home great appeal for empty nesters as well as family or first time home buyers. The vaulted master suite located at the rear of the home insures a quiet cozy private retreat. The master bath features two sinks, a large tub as well as a walk in closet, shower/toilet room that is located near the laundry for convenience.

The home also has spacious covered decks both in the front and rear and has an over sized two-car garage with bonus space above.

Our homes are typically heated and cooled with the latest in forced air heat pump technology. This home is fully customizable to fit your personal needs. For more information on this plan or one of your own call Brian or Maria Nilles at 299-8484 or visit our web site [www.everwoodhomes.net](http://www.everwoodhomes.net)



**Everwood Homes**

