

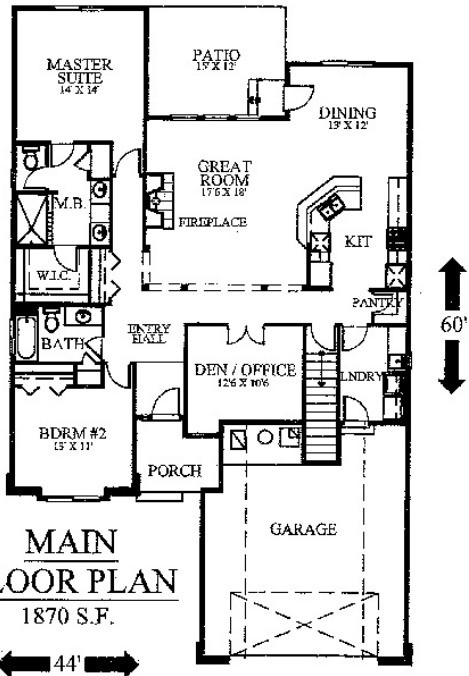
Information provided by



This week's Featured Plan, The Granite Pointe by longtime custom home builder Gordon Finch, has fast become the most sought after home in Spokane's South Hill Stone Crest PUD Neighborhood! The floor plan evolved through the numerous requests and desires of Gordon's home buyers. With 1870 sf of luxury one level living this home also boasts a versatile finished bonus room area for a total of 2214 sf. The main floor features a Master Bedroom Suite with its own full bathroom, a second bedroom and bathroom, a large den/office, dining room, and gourmet kitchen open to a large Great Room with soaring vaulted ceilings. A convenient laundry room and walk-in pantry complete the main floor. The additional bonus room can be a third guest bedroom, family room, hobby room, or just additional finished storage. Granite slab, Hardwoods, Custom Woodwork, and many additional custom and quality features abound in this home. This plan can be custom built with an oversized three car garage that has a much larger Bonus Room and even a third bathroom if desired. All homes in the Stone Crest PUD include efficient gas furnaces, gas hot water, central air conditioning, gas fireplaces, and complete front and back landscaping.

Gordon Finch has been designing and building award winning custom homes since 1974. For more information about Gordon Finch Homes visit our newly designed web-site at www.gordonfinchhomes.com.

To view this Granite Pointe home and other custom designed One-Level-Homes, visit the Stone Crest PUD, Open today from 12:00 to 4:00p.m. Your host will be Heidi Crawford with Windermere/Manito LLC. She can be reached at 509-995-0881. Stone Crest PUD is conveniently located on Spokane's South Hill at 51st Lane off Crestline St. This home is located at 5035 S. Stone Crest Lane.



Gordon Finch
HOMES, INC.

