

Information provided by



Comfortable yet efficient, this RANCHER's well-thought-out design offers the best of 'both worlds'!

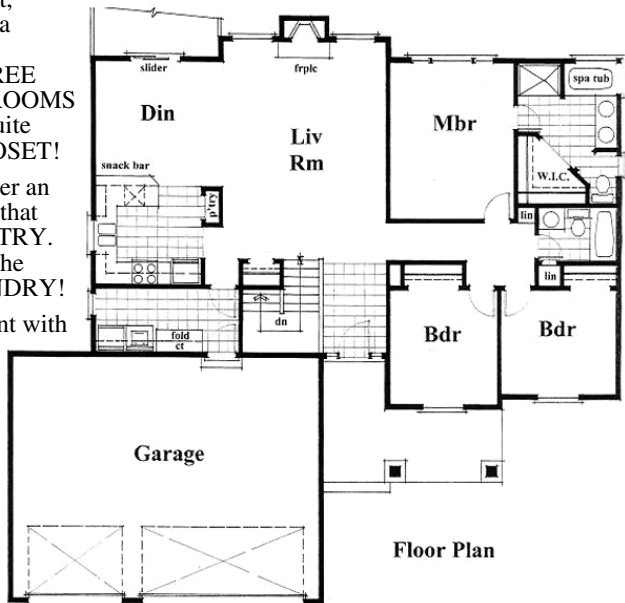
Typically built with LUSTROUS HARDWOOD FLOORS, a focal point, buyers will also enjoy a MANTLED GAS FIREPLACE and THREE MAIN-FLOOR BEDROOMS including the master suite with a WALK-IN CLOSET!

The kitchen offers either an ISLAND or peninsula that then allows for a PANTRY. Just off the kitchen is the MAIN FLOOR LAUNDRY!

An unfinished basement with roughed-in plumbing for the home's 3rd bath. When completed, this home can easily total OVER 3,000 square feet of finished living space!

GLEAMING WOODWORK is a standard trademark found in **every** home by Lanzce Douglass, Inc.

Currently there is one completed and another scheduled to be built. For prices, directions or more info contact **Greg Sather** at 509-328-5692.



Floor Plan