

Information provided by

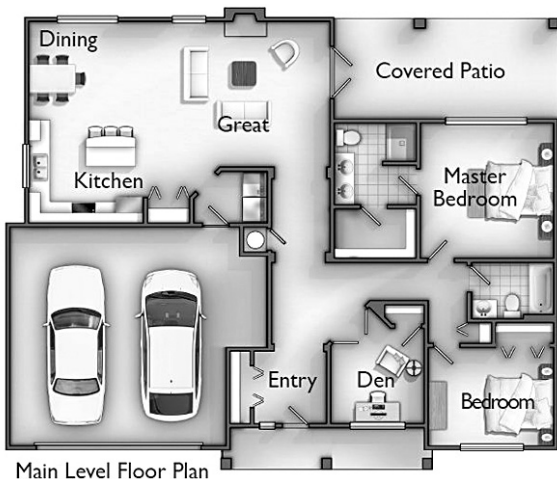


Early February Finish

## The Steptoe @ Vista Ridge PUD:

The Steptoe under construction at Vista Ridge, 5 Mile's premiere gated community! 3 bedroom, 2 bath distinguished main floor living! No step entry. Standard features include Granite slab kitchen counters with a full backsplash. Extra wide 36" doorways with easy grab brushed bronze finish door hardware. Hardwoods in high traffic areas. Generous covered outdoor living area. Distinctive craftsman styling. Hardie plank siding on all 4 sides. 6 year limited warranty! Reserve early & customize! Call for full feature list.

Vista Ridge is a secure gated community featuring views of Mt. Spokane and downtown, parking pockets, greenscapes and walking paths. Convenient location just minutes from shopping and downtown. Multiple lot options and plans are available.



Main Level Floor Plan

**Base Price:** Starting at \$249,000

**Address:** 2816 W. Helens Lane

**Website:** [www.MyTerraHomes.com](http://www.MyTerraHomes.com) or [www.facebook.com/myterrahomes](http://www.facebook.com/myterrahomes)

**Plan Information:** 1465 Sq. Ft. Finished, 3br/2bth, 2 Car Garage, No Step Entry, One Level Living, Large Covered Outdoor Living Area

**Contact:** Aaron Edwards 509.499.2432 (Terra Homes, Windermere)

**Directions:** S. Rim of 5 Mile Prairie. Left on 5 Mile Road off of N. bound Maple. Left at the top of the hill on Horizon Ridge Place at Vista Ridge entry (call Aaron if Gate closed).

The logo for TerraHomes features a stylized house silhouette above the word "TerraHomes" in a bold, sans-serif font.