

## Information provided by

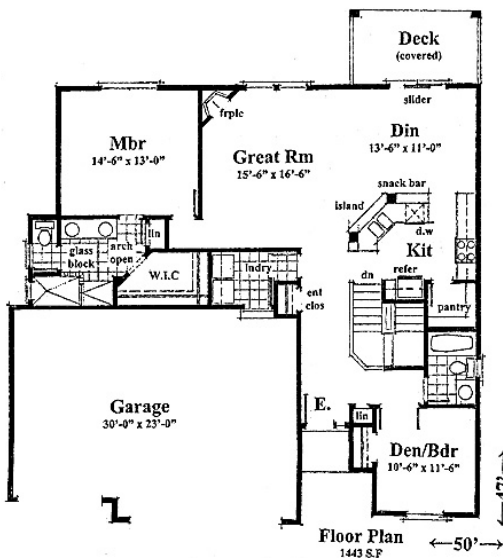


### Modern Daylight Rancher located on a panoramic view lot in beautiful Eagle Ridge.

Open, light and bright floor plan. Cook's kitchen with walk-in pantry, oversized granite tile island overlooking the great room with floor-to-ceiling windows to take in the late afternoon sunsets and panoramic territorial views. The master suite includes a custom corner fireplace, a walk-in mud-set shower, double vanities, private lavatory and generous walk-in closet. Additional main floor bedroom/den with closet located off the front entryway. Mudroom and laundry directly off of 3-car garage. Daylight lower level with roughed-in bathroom is ready to finish. Room for 2-3 additional bedrooms, large family room, hobby area and an abundance of storage.

### Home is open daily from 10am - 5pm.

From I-90 take the Pullman Hwy 195 South to Meadow Lane, turn right on Meadow Lane and veer left, take a Right onto Eagle Ridge Blvd, take a Right on Park Ridge Blvd, take a Left on Ravencrest and proceed to 5722 S. Ravencrest.



For more information contact:

**Jim Lister – Community Sales Manager**  
509-216-2222

Sales Office – 509-443-2222

Windermere Manito LLC

**CONDRON**  
**Homes**  
*Foundations Built on Trust*