

Information provided by



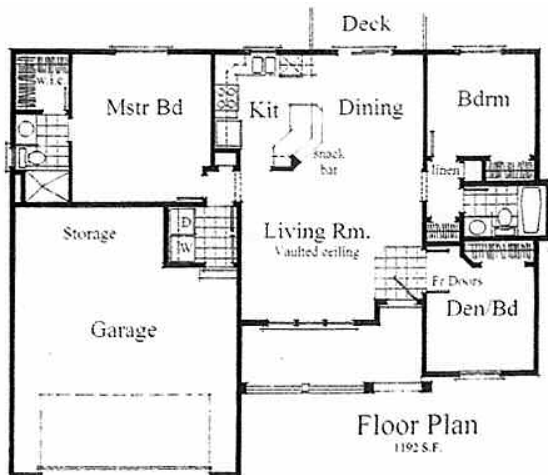
Harley C. Douglass, Inc. currently has 19 lots available in the Deer Park Golf Course community. Sixteen of the lots have no lots behind them which offer panoramic views of Mt. Spokane and the surrounding area. The remaining three lots are backed by the golf course.

For a limited time, we can offer 100% financing for qualified buyers.

You may reach our on-site sales associate, Gene

Allen @ 869-8005 or visit our model home at 832 N. Oasis Drive for more details. Don't forget to ask Gene about the savings you can get by using him as your real estate agent.

The range of house prices available in this community is \$150,000 to \$300,000.



Home Builder
Harley C. Douglass, Inc.
Spokane, Washington
509-487-9792