

Information provided by



EAGLE RIDGE

Plan: The Ridgemon

Address: 5911 S. Amberstone Ct.

Stop by this brand new Morse Western Home in beautiful Eagle Ridge just South of Spokane. The Ridgemon is located in a quiet cul-de-sac neighborhood in 7th Addition within 2 blocks of the 6 acre Whispering Pines Park. The Ridgemon features over 3,520 total square feet, 4 bedrooms, 2.5 bathrooms and a large bonus room. Relax in the great room or plan the next entertaining event with all the extras this home includes!

The Ridgemon is situated on a lot that allows for a full unfinished daylight walkout basement. It includes a Trex deck and front porch. Home includes partial landscaping and has fiber cement lap siding.

The Ridgemon is open TODAY from 11-5pm. All Eagle Ridge Model Homes are open every day, Monday-Friday, from 8am-5pm and open Saturday and Sunday from 11am - 5pm.

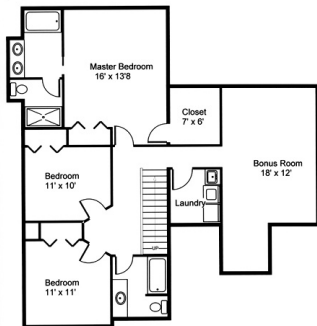
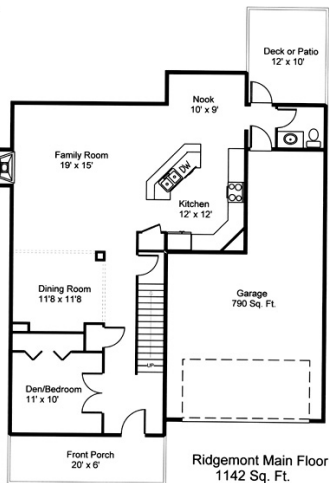
For more information contact:

Jim Lister - Community Sales Manager - 509-216-2222

Sales Office - 509-443-2222

Windermere Real Estate Manito LLC

Directions: From I-90 take the Pullman/Colfax Exit 279 (Hwy 195) to Meadow Lane, turn Right on Meadow Lane, veer Left, turn Right on Eagle Ridge Blvd, turn Right on Park Ridge Blvd, turn Left on Quest, turn Right on Tapestry, turn Right on Laurel Crest, turn Left on Amberstone and follow to home in culdesac.



Ridgemon 2nd Floor
871 Sq. Ft. with 365 Bonus Room

