

Information provided by



Eagle Ridge Plan: St. Tropez \$214,950

The St. Tropez is the first to show how Condron Homes defines "Easy Living" at its finest. The rancher-style home features 2 Bedrooms, 2 Bathrooms and 1216 total square feet. The great room, with a gorgeous fireplace featuring custom trim and mantle, is open to the large kitchen with island and access to the backyard patio directly off the dining room.

A luxurious, full master suite includes: double sinks, shower/tub combo and walk-in closet. The home comes with full front yard and back yard landscaping. It features an oversized 3-car garage, Hardi Plank siding and a beautiful entertaining patio just off the dining room through a slider.

Home is open Mon-Fri, 8am-5pm and Sat-Sun, 11am-5pm.

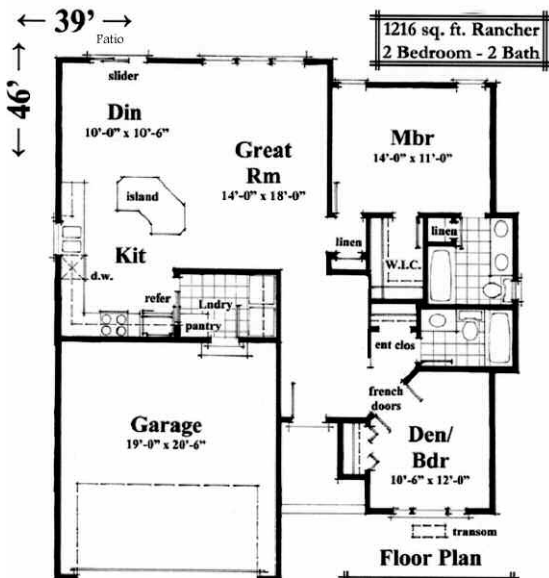
For more information contact:

Jim Lister - Community Sales Manager - 509-216-2222

Sales Office - 509-443-2222

Windermere Real Estate/ Manito LLC

Directions: From I-90: Take the Pullman/Colfax exit 279 South (Hwy 195). Follow Hwy 195 4.4 miles to Meadow Lane and turn Right. Veer Left on Meadow Lane and turn Right onto Eagle Ridge Blvd. Turn Right on Park Ridge Blvd. Turn Left on Ravencrest and follow to home on Right.



CONDRON
Homes
Foundations Built on Trust