



EAGLE RIDGE

Plan: The Cascade EX

Address: 5416 S. Osprey Heights

Extraordinary views are to be expected from this wonderful new floor plan by Morse Western Homes. This irresistible daylight walkout rancher boasts a beautiful gourmet kitchen with high-end appliances, granite surfaces and is open to the great room. Great room features floor-to-ceiling windows and a gas fireplace accented with custom stonework and mantle. The amazing oversized Trex deck extends the length of the back of the home and is perfect for entertaining and taking in the views.

The Cascade EX features a main-floor master suite with luxurious bathroom and a main-floor Guest bedroom/Den. This home is situated on a lot that allows for a full finished daylight walkout basement with 2 additional bedrooms, bathroom and family room. Home includes front-yard landscaping and has fiber cement lap siding.

The Cascade EX is open TODAY from 11-5pm.

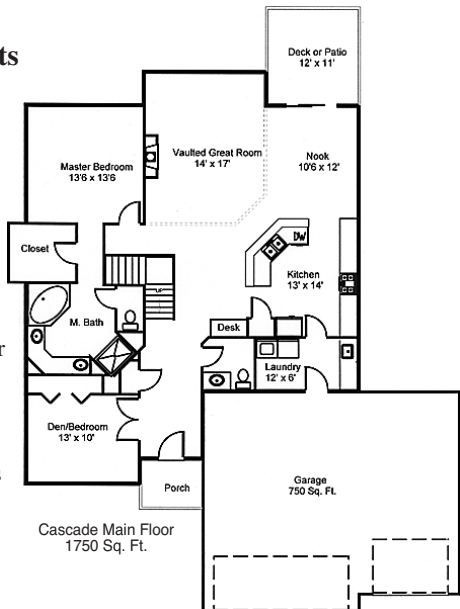
All Eagle Ridge Model Homes are open every day Monday-Friday from 8am-5pm and open Saturday and Sunday from 11am - 5pm.

For more information contact:

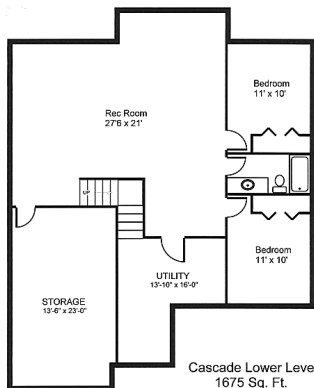
Jim Lister – Community Sales Manager
509-216-2222

Sales Office – 509-443-2222
Windermere Real Estate/Manito, LLC

Directions: From I-90 take the Pullman/Colfax Exit 279 (Hwy 195) to Meadow Lane, turn Right on Meadow Lane, veer Left, turn Right on Eagle Ridge BLVD, turn Right on Park Ridge BLVD, turn Left on Osprey Heights Drive and follow to home on Left.



Cascade Main Floor
1750 Sq. Ft.



Cascade Lower Level
1675 Sq. Ft.

