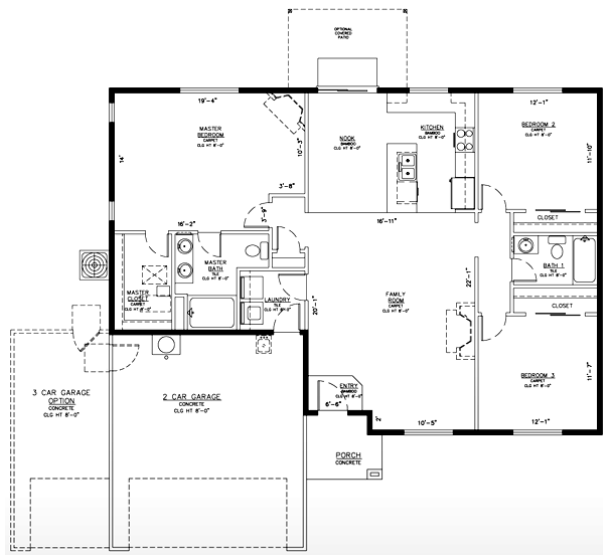


Information provided by



Come and view this spacious one level home featuring 3 bedrooms and 2 bathrooms built by Envision Homes. Private Master Bedroom on opposite side of home from other bedrooms features a full bathroom with double sinks and huge walk-in closet. Value series model includes vinyl flooring, laminate countertops, front yard landscaping w/ sprinklers & Huntwood cabinetry. Custom series features granite countertops, bamboo



floors, A/C, front & backyard landscaping w/ sprinklers & more! All of our homes come with a vinyl fenced backyard. Only 10 minutes from Spokane, Cheney, Airway Heights & Medical Lake. This community offers a location and home that you will be sure to love!

The open house is at 7303 S. Dour St. from noon-5 pm. Take I-90 east from downtown Spokane. Exit 272 (Medical Lake) and head east over freeway. Go straight at 4-way stop and take a right on Dour St. 1/2 mile from stop sign. This home is priced at \$165,990.

Visit www.envisionwa.com

E
ENVISION
Homes