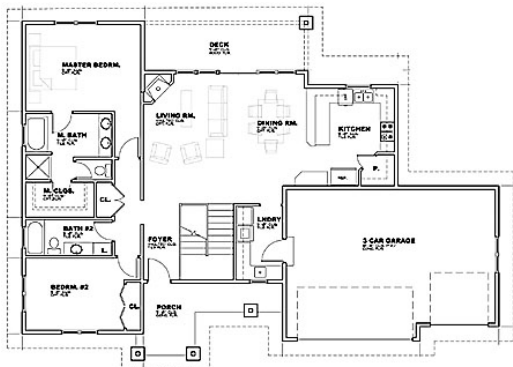


Information provided by



Coyote Rock is offering an extraordinary **waterfront** home package on the Spokane River. This floor plan is perfect for main-floor living and has the option of a finished daylight lower level.



From this home you can enjoy the Spokane River with your own **private dock**, access the **Centennial Trail**, take in the views of **Arbor Crest Winery**, and still be **less than two miles from I-90**.

Your private dock allows you access to four miles of boatable water perfect for waterskiing, fishing, and kayaking. Myrtle Point, Plante's Ferry Park, and Mirabeau Point Park are all within a mile of Coyote Rock and easily accessed from the Centennial Trail.

This is an exceptional value for **under \$500,000**. Please call **509.922.4239** for a private tour. Visit us on the web at **www.coyoterockwaterfront.com**.

