

Information provided by



The Steptoe @ Vista Ridge PUD:

The Steptoe available now at Vista Ridge, 5 Mile's premiere gated community!

3 bedroom, 2 bath distinguished main floor living! No step entry.

Standard features include Granite slab kitchen counters with a full back splash. Extra wide 36" doorways with easy grab oil rubbed bronze finish door hardware.

Brazilian cherry hardwoods! Generous covered outdoor living area. Distinctive craftsman styling. Hardie plank siding on all 4 sides. 6 year limited warranty! Call for full feature list.

Vista Ridge is a secure gated community featuring views of Mt. Spokane and downtown, parking pockets,

greenscapes and walking paths. Convenient location just minutes from shopping and downtown. Multiple lot options and plans are available.

Price: \$229,900

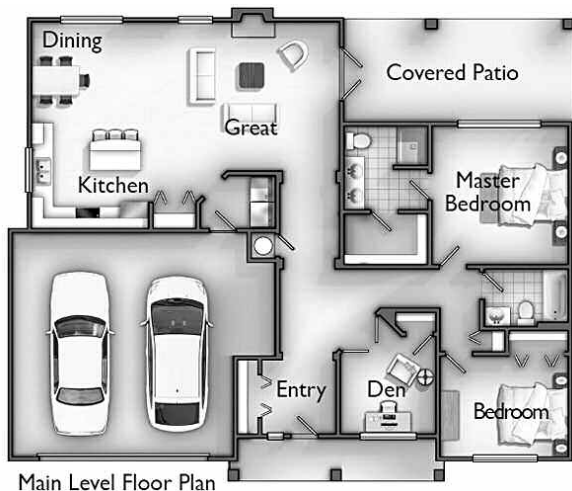
Address: 2816 W. Helens Lane

Website: www.MyTerraHomes.com

Plan Information: 1465 Sq. Ft. Finished, 3br/2bth, 2 Car Garage, No Step Entry, One Level Living, Large Covered Outdoor Living Area

Contact: Aaron Edwards 509.499.2432 (Terra Homes, Windermere)

Directions: S. Rim of 5 Mile Prairie. Left on 5 Mile Road off of N. bound Maple. Left at the top of the hill on Horizon Ridge Place at Vista Ridge entry (call Aaron if Gate closed).



Main Level Floor Plan

